

Autonomous Mobility Solution

AMS-SLAM-V100/200



AMS-SLAM-V100 and V200 are a camera SLAM package provided in a board form and is integrated with a camera module and YUJIN SLAM software. YUJIN SLAM (Simultaneous Localization and Mapping) is a technology that allows robots to create accurate maps in variety of environments, and simultaneously extract reliable robot locations inside the map.

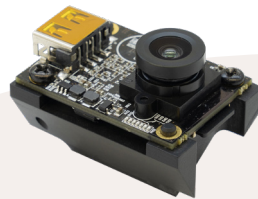
AMS-SLAM-V100



Single Camera | Zero degrees

- Single camera module with Yujin Robot SLAM
- Mounts at zero degrees for ceiling-based localization
- Instant repositioning
- Precise and reliable
- Compact and cost efficient
- Ultra-low power consumption
- Easy installation on any robot

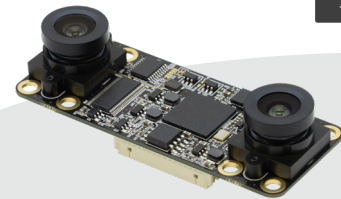
AMS-SLAM-V101



Single Camera | 30~40 degrees

- Instant repositioning
- Precise and reliable
- Video monitoring / streaming
- Motion-detection surveillance
- Compact and cost efficient
- Ultra-low power consumption
- Easy installation on any robot

AMS-SLAM-V200



Dual Camera | 30~40 degrees

- Wide FoV stereo camera : 120-180 degrees
- Obstacle detection and distance measurement
- Optimized for large environments
- Instant repositioning
- Ready-to-use stereo camera parameters and images
- Video monitoring / streaming

Specifications

	Items	AMS-SLAM-V100	AMS-SLAM-V101	AMS-SLAM-V200
Hardware	Cameras	1	1	2
	Camera mounting	0 degrees	30 ~ 45 degrees (factory option)	30 ~ 45 degrees (factory option)
	CPU	Single core (ARM Cortex-A7 @ 1.2GHz)	Single core (ARM Cortex-A7 @ 1.2GHz)	Quad core (ARM Cortex - A7 @ 1.2GHz)
	RAM	128MB	128MB	256MB
	ROM	16MB	16MB	1GB
	Dimension (D x W x H)	3.5 x 1.5 x 2.5 cm	3.5 x 1.5 x 2.5 cm	6.5 x 1.5 x 2.5 cm
	Gyro	Included	Available for external Chip	Available for external Chip
Software	SLAM engine	Included	Included	Included
	Obstacle detection	N/A	N/A	-
	Video monitoring	N/A	15 fps (H.264)	15 fps (H.264)
Performance	Processing speed	15 fps	15 fps	20 fps
	CPU load	< 40%	< 40%	Under 35%
	Coverage	2000 m ²	2000 m ²	4000 m ²
	Memory usage	SLAM : 7MB Gridmap : 10MB	SLAM: 7MB Gridmap: 10MB	SLAM: 32MB Gridmap: 10MB

* Specifications and design are subject to change without any prior notice.